

## Surrey County Council's Children's Services Update

Strategic actions have been taken to strengthen partnerships and deliver more effective services to vulnerable children via the Surrey Alliance. The actions taken have been informed by the Joint Area Review (JAR) that took place in April 2008, which also highlighted areas for change in the children's service.

A significant response to the JAR is the strategic preventative approach, which is designed to enable Surrey and partners to achieve clarity about what is meant by prevention, early intervention and the criteria for targeted and acute services.

The strategic preventative approach sets out how different levels of need should be understood, for example, are universal services (level 1) available to children and young people through GPs, childcare and schools. Targeted services (level 2) are services for children with additional needs. In these circumstances a common assessment framework assessment may be used and a lead professional identified. Specialist services (level 3 and 4) are for children and young people who are suffering or are likely to suffer significant harm ie there are immediate concerns of physical or sexual abuse or severe neglect. In these instances a referral using the multi agency referral form should be completed.

A major concern identified in the JAR was inconsistent application of thresholds at level 3 and 4 (provided by children's services) To make this clear work has been undertaken to produce eligibility criteria for social work intervention for children. It is key that these thresholds are understood across the partnership.

To create a strong platform to meet responsibilities the children's service has scrutinised its capacity to deliver level 3 and 4 services, which has resulted in the redesign of its structure. As a result the service will be better placed to focus on core business and to secure a more positive interface with local partners.

From 13 April children's services are now organised into four geographical areas. The areas are located as follows:

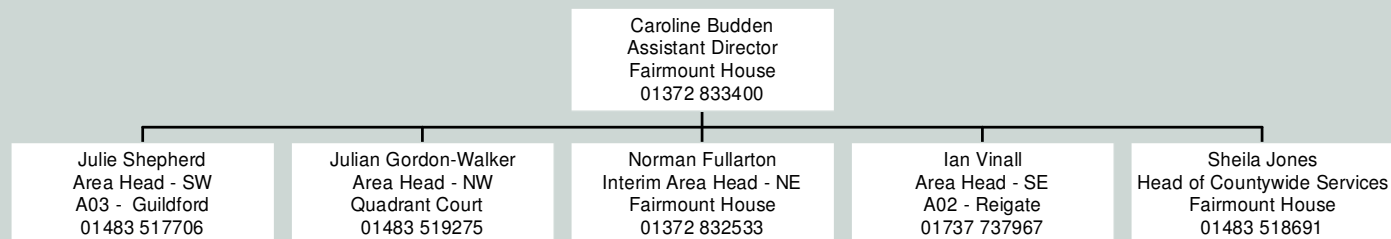
- North-west - Quadrant Court, Woking
- North-east – Fairmount House, Bull Hill, Leatherhead
- South-west –Grosvenor House Cross Lanes Guildford (A03)
- South-east –Omnibus Building, Lesbourne Road, Reigate (A02)

New referrals into the children's service should continue to be made to the contact centre (0300 200 1006). Where appropriate, responses will follow from duty and assessment teams based in the local area.

Other local area teams include children in need, child protection and court proceedings and looked after children.

All other services are managed on a countywide basis and includes private fostering, adoption and fostering and children with disabilities. Arrangements in the Surrey children's safeguarding unit remain the same except for an enhanced focus on its quality assurance function.

## CHILDREN'S SERVICE MANAGEMENT STRUCTURE April 2010



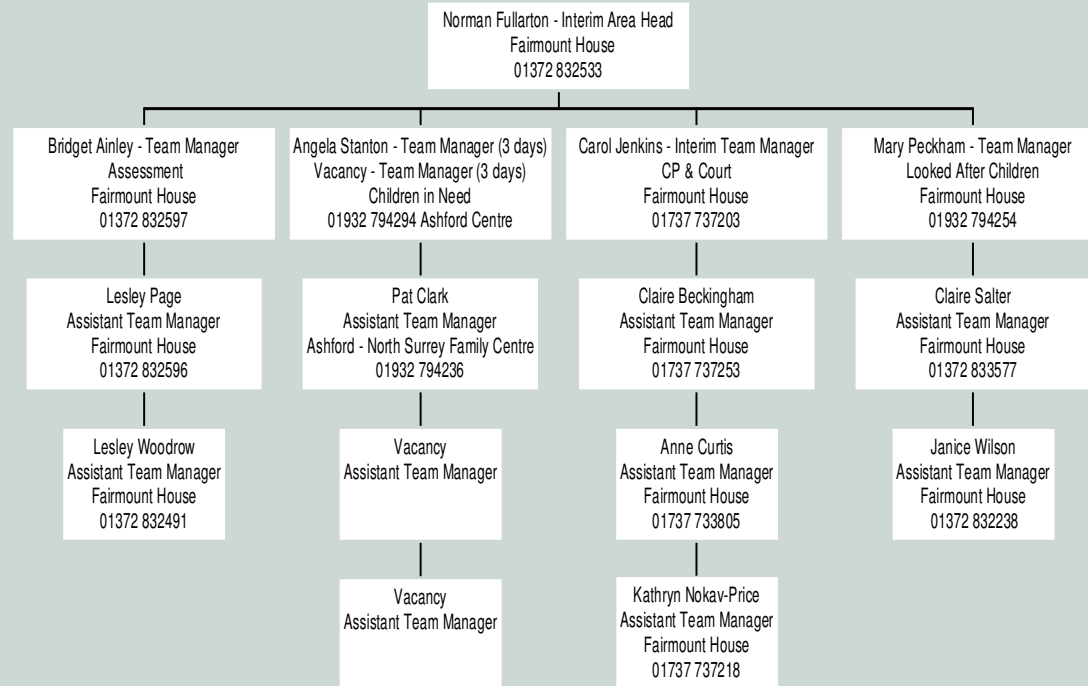
SOUTH WEST AREA



NORTH WEST AREA

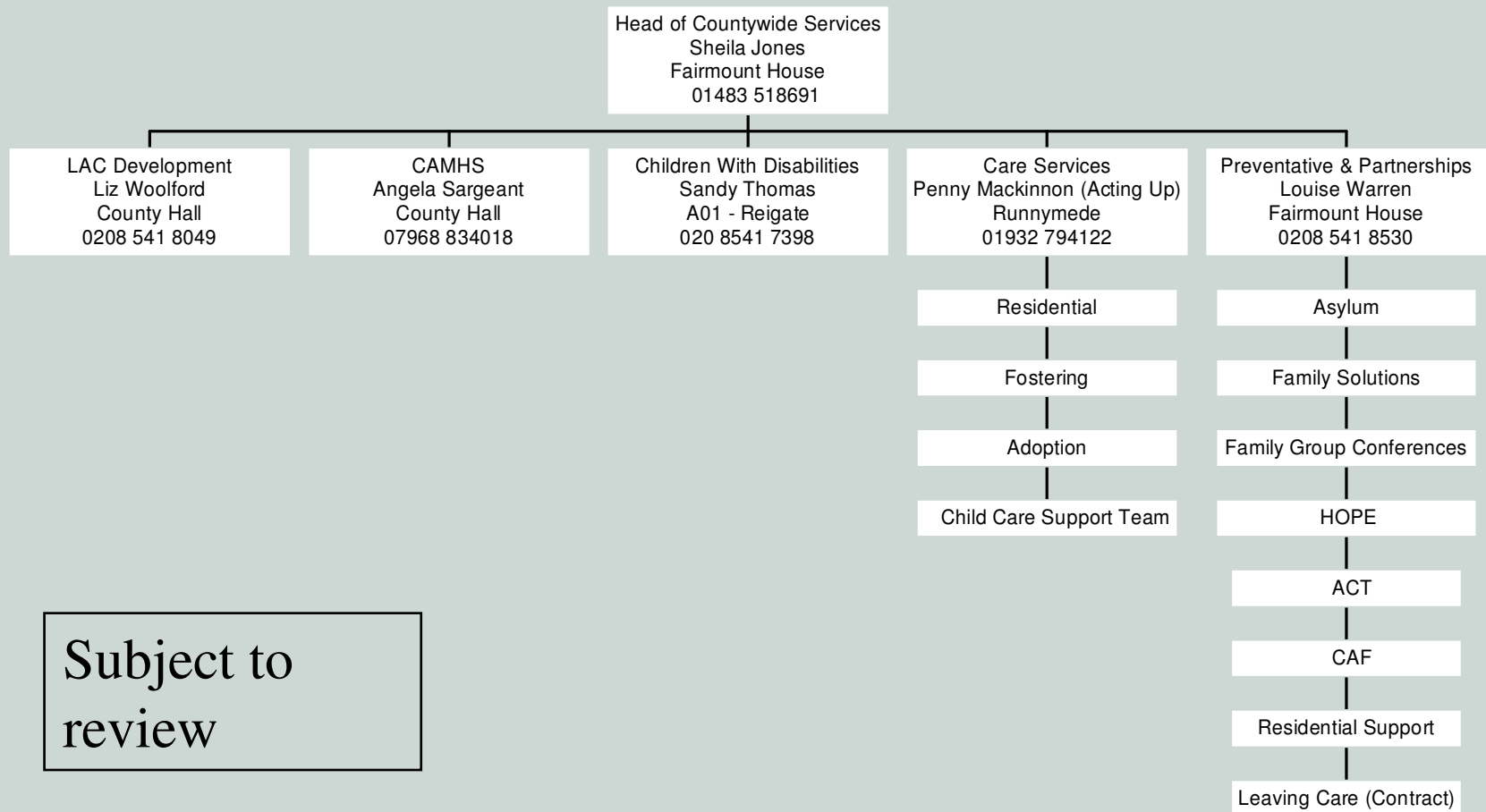


NORTH EAST AREA



SOUTH EAST AREA





Subject to  
review

